



Comfortable & Safety

ROPS/FOPS canopy is designed for operator comfort, safety and excellent visibility to maximize productivity. Wide entrance of operator compartment, handles and non slip foot steps are provided for operator convenience.

Joystick lever



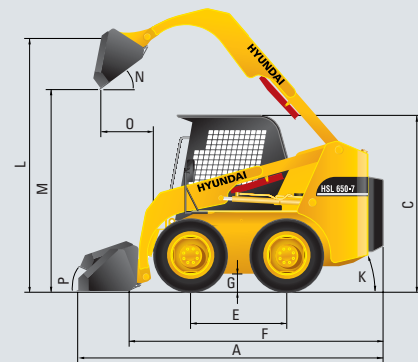
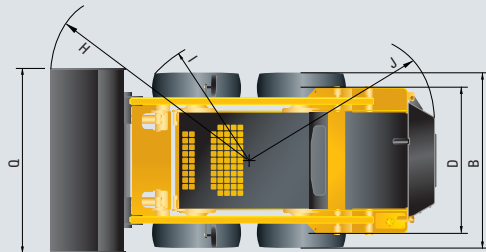
Simultaneous Control of Travel & attachment

Reliable safety device



The adoption of a double safety gear minimizes the occurrence of accidents. A safety lever is to stop all functions when the operator departs from the unit ; the hydraulic line is to be cut off when the key is removed. The parking brake is to be engaged by raising the safety bar.

DIMENSIONS



SPECIFICATION

DESCRIPTION		UNIT	HSL650-7
Rated operating capacity		lb (kg)	1,433 (650)
Tipping load		lb (kg)	2,888 (1,310)
Operating weight		lb (kg)	5,787 (2,690)
ENGINE	Model	-	Kubota V2203M
	Gross output	PS (kW)	44.2 (32.5)
	Net output	PS (kW)	42.6 (31.3)
	Rated speed	rpm	2,500
	Cooling	-	Water
GENERAL	Steering controls	-	2 Levers
	Loader controls	-	
	Tires-standard	-	10-16.5,6PR
	Max. travel speed	mph (km/h)	7.3 (11.8)
HYDRAULICS	Loader pump flow	gpm (l / mn)	18.31 (69.3)
	Loader pressure	psi (bar)	2,538 (175)
D I M E N S I O N S	A Length with bucket	in (mm)	128.7 (3,270)
	B Width, less bucket	in (mm)	59.6 (1,515)
	C Height to cap top	in (mm)	77.4 (1,965)
	D Tread	in (mm)	49.4 (1,255)
	E Wheelbase	in (mm)	39.0 (990)
	F Length, less bucket	in (mm)	103.3 (2,625)
	G Ground clearance	in (mm)	7.2 (183)
	H Turn radius, bucket	in (mm)	76.2 (1,935)
	I Turn radius, front tire	in (mm)	49.6 (1,260)
	J Turn radius, rear and corner	in (mm)	61.4 (1,560)
	K Rear departure angle	-	28°
	P E R F O R M A N C E	L Height to bucket pivot pin	in (mm)
M Max. dump height		in (mm)	88.2 (2,240)
N Dump angle		-	45°
O Reach at max. dump		in (mm)	21.7 (550)
P Rollback at ground		-	27°
Q Bucket width		in (mm)	64.0 (1,625)
Bucket cap. heaped		ft² (m²)	10.9 (0.31)
Fuel capacity		gal (l)	16 (60)
Hyd reservoir capacity	gal (l)	10 (38)	

STANDARD EQUIPMENT

Hand throttle lever
Direct cooling system
Dual element aircleaner
Aux. piping (3-spool)
Joystick lever
Bow tie drive chain
Console
Mold dashboard
Canopy (ROPS/FOPS)
Room mirror
Vandalism Protection
Spark arresting muffler
Seat bar & seat belt

OPTIONAL EQUIPMENT

Pre-cleaner
Self levelling system
Master switch
Backup alarm
Enclosure Cabin (ROPS/FOPS)
Heater
Air-con & heater
Defroster
Fenders
Side mirrors
Turn lamp



* Photo may include optional equipment

HSL650-7

SKID STEER LOADERS

Power & Comfortable Operation



Increase front visual range



Foot rest



Centralized switches



Centralized dashboard



Multi-purposed storage box



ROPS / FOPS Canopy
ROPS : Roll Over Protective Structure
FOPS : Falling Object Protective Structure

HYUNDAI HEAVY INDUSTRIES CO.,LTD. CONSTRUCTION EQUIPMENT

Head Office(Sales Office)
1 JEONHA-DONG, DONG-GU, ULSAN, KOREA Tel (82) (52) 202-7970, 7729, 0971 Fax (82) (52) 202-7979, 7720
U.S. Operation : Hyundai Construction Equipment U.S.A., Inc.
955 ESTES AVENUE, ELK GROVE VILLAGE IL, 60007 Tel (1) 847-437-3333 Fax (1) 847-437-3574
European Operation : Hyundai Heavy Industries Europe N.V.
VOSSENDAAL 11, 2440 GEEL, BELGIUM Tel (32) 14-56-2200 Fax (32) 14-59-3405
India Operation : Hyundai Construction Equipment India Pvt., Ltd
PLOT NO.A-2, CHAKAN INDUSTRIAL AREA, VILL.- KHALUMBRE,
TALUK-KHED, DIST-PUNE 410 501, INDIA Tel (91) 21-3530-1700 Fax (91) 21-3530-1712

PLEASE CONTACT

www.hyundai-ce.com

2008. 12 Rev 3.

HYUNDAI
HEAVY INDUSTRIES CO.,LTD.

NEW HYUNDAI SKID STEER LOADER HSL650-7



* Photo may include optional equipment



* Photo may include optional equipment

An ideal arrangement of component parts ensure easy access and convenience for maintenance.



Tilting canopy for easy access

Service technicians can get to hydraulic/hydrostatic components quickly by removing two nuts simply and lifting the canopy back. Gas spring for easier lift and locking device are installed.



Centralized fuse box for easy inspection



Spark arresting muffler



Quick engine access

A swing out tailgate opens the way to engine checks and fills, for the battery and oil drain. The oil cooler is removable to allow the radiator to be easily cleaned.



Double safety canopy

Double locking system for canopy enables service to be safer while canopy is raised up open.



Boom Locking system

Loader cylinder locking bar is provided for service work.



Hydraulic oil level gauge



Tilting canopy for easy access

Service technicians can get to hydraulic/hydrostatic components quickly by removing two nuts simply and lifting the canopy back. Gas spring for easier lift and locking device are installed.

Emission Regulated Engine
Environmental Friendly worldwide

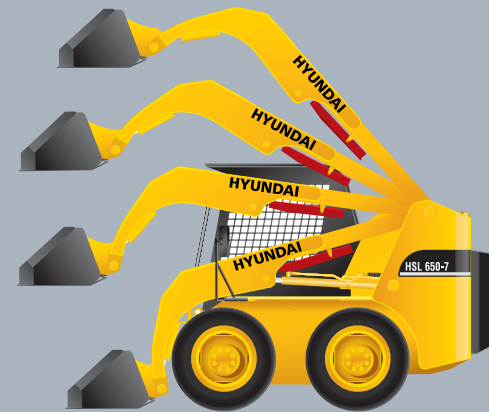


KUBOTA V2203M ENGINE

Market approved quality of Kubota V2203M engine ensures incomparable performance, durability and additional value to the machine. 44ps of the engine is more than enough to suit any work, not just with normal bucket but with special attachments requiring high power as well.

Self levelling control system

The self levelling control system is available as option for lifting operations. When raising the loader boom, the bucket positioning valve directs the oil from the boom cylinder to the bucket cylinder to maintain the level of bucket automatically for more efficient load handling works. Operator can concentrate on maneuvering and lifting tasks for fast cycle times.
(Optional item)



Easy access for maintenance

Full open type canopy applied and control valve arranged on the upper position provides all pipes and relief valve easy access for maintenance.